



GRONINGEN SEAPORTS

From Delfzijl:

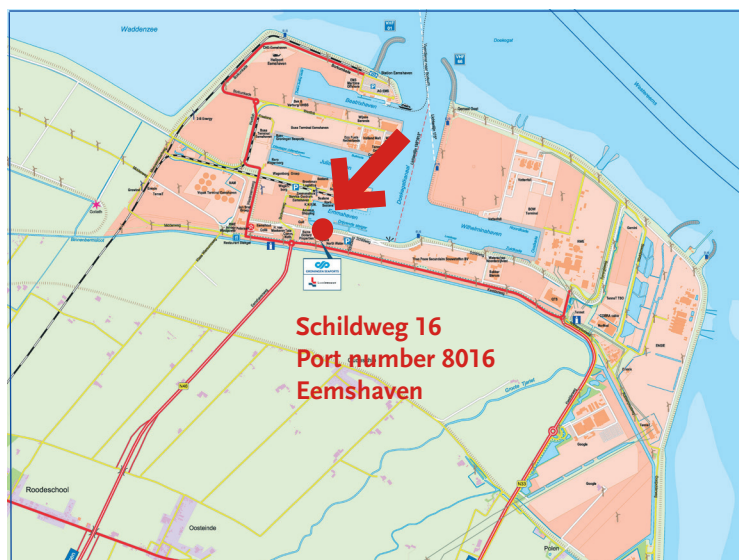
Take the N360 towards Appingedam until the crossroads with the N33 (Assen-Eemshaven). Turn **left** onto the N33 towards Eemshaven. You will pass Holwierde, Losdorp and Spijk. Continue along this road until the second roundabout in Eemshaven; turn **left** (third exit). You are now on the Kwelderweg. Take the third turning on the **right**, after the Theo Pouw yard. At the end turn to the **left**. After a few hundred metres Nijlicht appears on your **left hand**.

From Groningen (via N46):

Take the N46 (Eemshavenweg) towards Eemshaven. Continue along this road until Eemshaven and take the first turning on the **right**. You are now on the Kwelderweg. Take directly the first turning on the **left** and at the end of the road turn to the **right**. Nijlicht appears on your **right hand**.

From Veendam:

Take the N33 towards Eemshaven. You will pass Siddeburen, Appingedam, Holwierde, and Spijk. Continue along this road until the second roundabout in Eemshaven; turn **left** (third exit). You are now on the Kwelderweg. Take the third turning on the **right**, after the Theo Pouw yard. At the end turn to the **left**. After a few hundred metres Nijlicht appears on your **left hand**.



GRONINGEN SEAPORTS

More information

Groningen Seaports / MFR Nijlicht
Schildweg 16
9979 XR Eemshaven

Phone +31 (0)596 640400

E-mail: info@groningen-seaports.com

Website: www.groningen-seaports.com

Twitter: [@GroningerHavens](https://twitter.com/GroningerHavens)